

●Part Number Guide

T-FF.FFFK-LC-FT-OT-ESR-TR-S

T(Type 型号): W=3×8 Tuning Fork

F(Frequency 标称频率):

LC(Load Capacitance 负载电容):12.5=12.5pf 00=series, etc

FT(Frequency Tolerance 调整频差):30=±30ppm, etc

OT(Operating Temperature 工作温度):1060=-10°C to +60°C 4085=-40°C to +85°C, etc

ESR(Equivalent Series Resistance 等效阻抗)

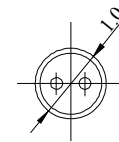
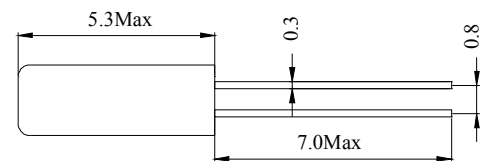
TR(Tape and Reel 编带)

S(Special Requirement 特殊要求)



• Mechanical Dimensions外型尺寸

UNIT(单位):mm(毫米)



●Electrical Specifications 电气参数

型号	Holder Type	Turning Fork 308(KHz)
频率范围	Frequency Range	30.000KHz to 200.00KHz
调整频差	Frequency Tolerance (ΔF) (at25°C)	±10ppm to ±100ppm
频率温度系数	Parabolic curvature constant	$[-0.035\text{ppm} \pm 0.01\text{ppm}/^\circ\text{C}^2]$
工作温度范围	Operating Temperature Range	-10°C~+60°C to -40°C~+85°C
储存温度范围	Storage Temperature Range	-40°C~+85°C
老化	Aging (25°C)	±5ppm/Year Maximum
静电容	Shunt Capacitance (C0)	1.75pF max (TYP.)
动电容	Motional Capacitance(C1)	3.5fF Typical
激励功率	Drive Level	1uW ~ 10uW
绝缘阻抗	Insulation Resistance (Rs)	500 Mega ohms Minimum at D.C100V
负载电容	Load Capacitance (CL)	Suggested by customer

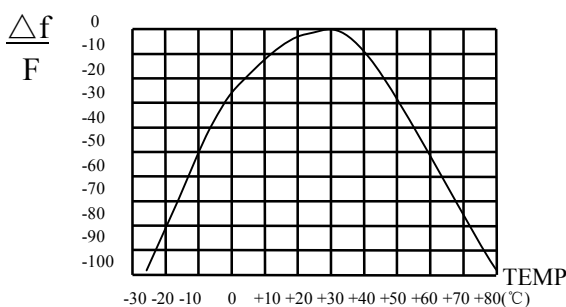
●Equivalent Series Resistance and Mode of Operation

等效阻抗和振荡模式

Frequency Range 频率范围	ESR (Ω) 等效阻抗
30.000-40.000 KHz	40K Max
40.000-60.000 KHz	30K Max
60.000-70.000 KHz	25K Max
70.000-100.000 KHz	22K Max
100.000-200.000 KHz	20K Max

●Frequency vs. Temperature Curve

频率温度曲线



• Reflow Condition 回流焊条件

