

## ●Part Number Guide

T-M-FF.FFFM-LC-FTFS-OT-ESR-TR-S

T(Type 型号): W=3×8 Tuning Fork

M(Mode of Operation 振荡模式):F=Fundamental T=Third Overtone, etc

F(Frequency 标称频率):Normal – 5 digitals of Frequency, e.g. 4.0000M, 12.000M

Special – All digitals of Frequency, e.g. 13.225625M

LC(Load Capacitance 负载电容):20=20pf 00=series, etc

FT(Frequency Tolerance 调整频差):30=±30ppm, etc

FS(Frequency Stability 温度频差):50=±50ppm, etc

OT(Operating Temperature 工作温度):1060=-10°C to +60°C 4085=-40°C to +85°C, etc

ESR(Equivalent Series Resistance 等效阻抗)

TR(Tape and Reel 编带)

S(Special Requirement 特殊要求)

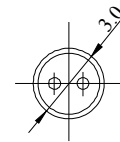
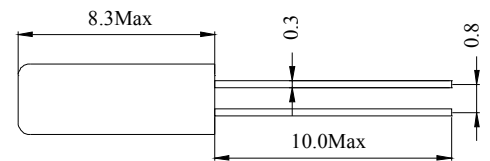


## ●Electrical Specifications 电气参数

型号	Holder Type	Turning Fork 308(MHz)
频率范围	Frequency Range	4.000MHz to 70.000MHz
调整频差	Frequency Tolerance ( $\Delta F$ ) (at25°C)	±10ppm to ±100ppm
温度频差	Frequency Stability	±10ppm to ±100ppm
工作温度范围	Operating Temperature Range	-10°C~+60°C to -40°C~+85°C
储存温度范围	Storage Temperature Range	-40°C~+85°C
老化	Aging (25°C)	±5ppm/Year Maximum
静电容	Shunt Capacitance (C0)	5.0pF Maximum
激励功率	Drive Level	100μW Typical
绝缘阻抗	Insulation Resistance (Rs)	500 Mega ohms Minimum at D.C100V
负载电容	Load Capacitance (CL)	Suggested by customer

## • Mechanical Dimensions外型尺寸

UNIT(单位):mm(毫米)

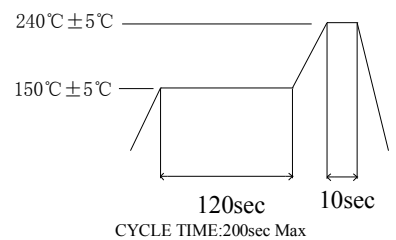


## ●Equivalent Series Resistance and Mode of Operation

等效阻抗和振荡模式

Frequency Range 频率范围	ESR ( $\Omega$ ) 等效阻抗	Mode 振荡模式
4.0000-6.0000 MHz	120 Max	Fundamental
6.0000-10.000 MHz	80 Max	Fundamental
10.000-27.000 MHz	50 Max	Fundamental
14.000-20.000 MHz	40 Max	Fundamental
27.000-36.000 MHz	100 Max	Third Overtone
36.000 MHz-70.000MHz	80 Max	Third Overtone

## • Reflow Condition 回流焊条件



## ●Frequency vs. Temperature Curve

频率温度曲线

